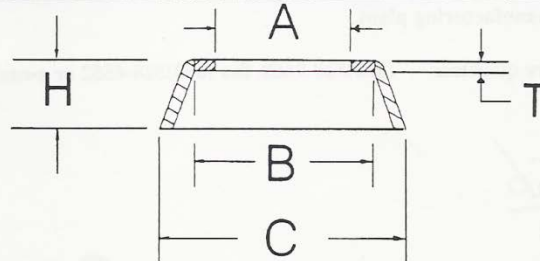


**TECHNICAL SPECIFICATIONS - ROD END SEALS - WS SERIES**



**Note: One (1) rod end requires two (2) rod end seals.  
Standard packaging is six (6) seals per pack.**

SIZE	A	B	C	H	T	SIZE	A	B	C	H	T
3/16"	0.200	0.326	0.442	0.095	0.020	5MM	5.25	8.28	11.22	2.41	0.50
1/4"	0.260	0.375	0.500	0.120	0.027	6MM	6.25	9.53	12.70	3.05	0.69
5/16"	0.322	0.487	0.700	0.200	0.047	8MM	8.25	12.37	17.78	5.08	1.20
3/8"	0.385	0.530	0.800	0.220	0.047	10MM	10.25	13.46	20.32	5.59	1.20
7/16"	0.448	0.626	0.875	0.250	0.047	12MM	12.25	18.54	28.58	6.35	1.20
1/2"	0.510	0.730	1.125	0.250	0.047	14MM	14.25	18.54	28.57	6.35	1.20
5/8"	0.635	0.882	1.235	0.267	0.047	16MM	16.25	22.40	31.70	6.80	1.20
3/4"	0.760	1.006	1.381	0.375	0.047	18MM	18.25	22.60	32.69	8.25	1.20
1"	1.010	1.230	2.100	0.200	0.050	20MM	20.25	25.15	38.10	10.16	1.20
						25MM	25.25	33.80	53.30	12.70	1.50
						30MM	30.25	35.56	55.88	13.97	2.03